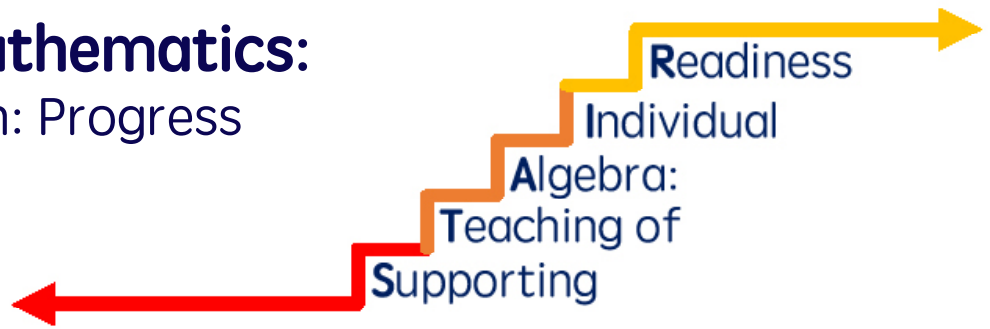


Resources in Mathematics:

Data Interpretation: Progress Monitoring



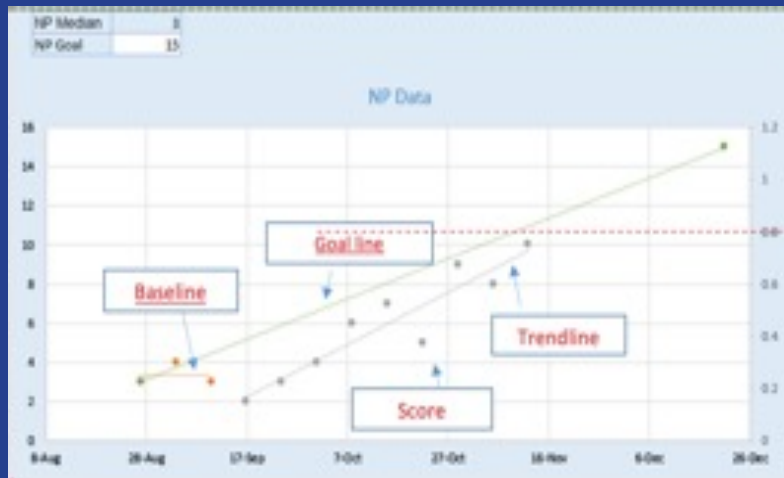
Key Terms for Reading Graphed Progress Monitoring Data

Baseline – score(s) that represent median student performance prior to initiating intervention

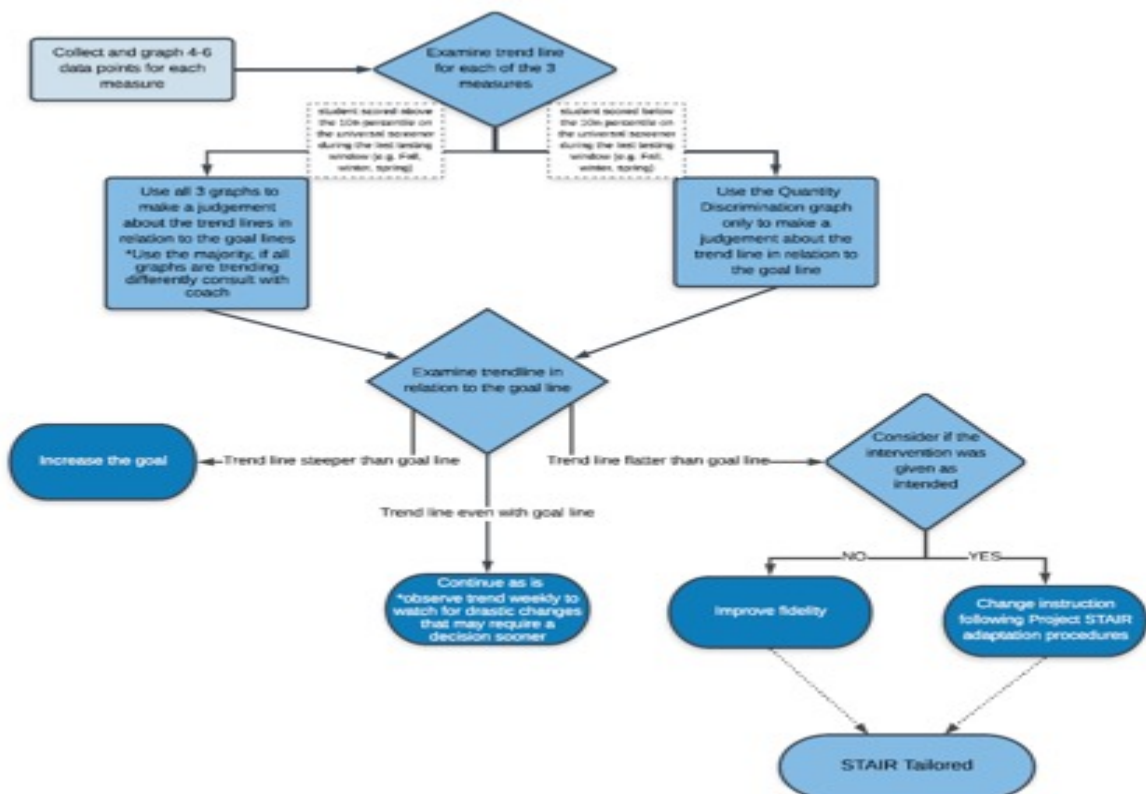
Slope – growth rate of student progress

Trendline – a line which shows the direction of the students’ overall growth during intervention period

Goal line – a line which connects the baseline score to the score expected at the end of the intervention

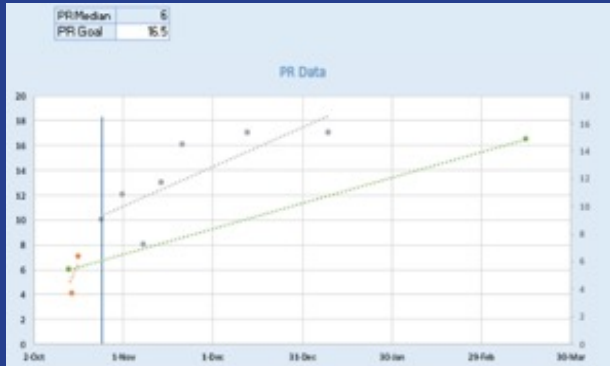
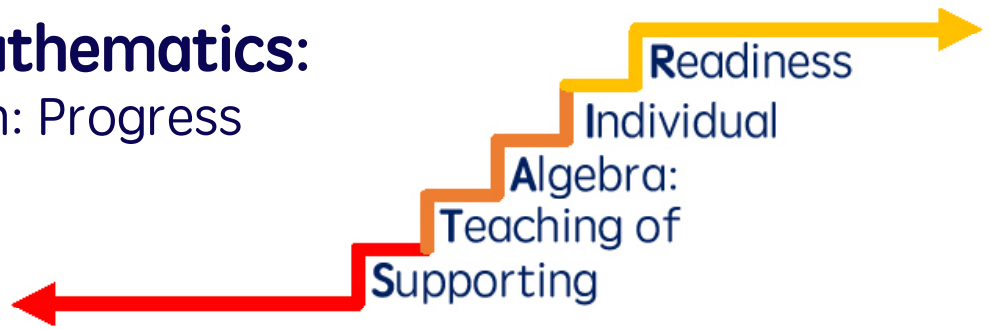


Use the flowchart to guide decision making



Resources in Mathematics:

Data Interpretation: Progress Monitoring



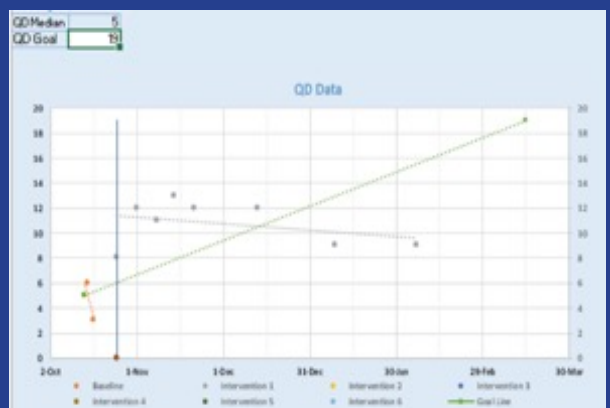
The trendline is steeper than the goal line, this indicates that the student is on track to exceed the goal.

Consider increasing the goal



The trendline is even with the goal line, this indicates that the student is on track to meet their goal.

Continue as is and observe the trendline weekly.



The trendline is flatter than the goal line, this indicates that the student is not on track to meet their goal.

Consider if fidelity needs to be addressed and revisit the graph in 4–6 more data points. If fidelity is not a concern, you should consider a change in instruction.